

NEXT

MODULAR SENSOR SYSTEM

From install and setup, to AI-enhanced imaging, to advanced onboard technologies, NEXT will change your entire camera experience. The powerful AI-based analytics and color forensic evidence—along with the modular design with mix-and-match components—support endless customer applications.



Five-Minute, Three-Step Installation

Our patented snap-and-twist design, combined with the sensor's AI-powered auto-tuning, reduce installation and setup time to under 5 minutes.

Most Powerful AI Imaging on the Market

The sensor's AI Vision adds a layer of intelligence to traditional video for sharper, clearer, less pixelated images that are always in color, no matter how dark it gets.

A Complete Communication System Onboard

The camera is packed with intelligence, including customizable LED signal lightbars, as well as 2-way audio, so you can listen in and broadcast instructions.

Practical Analytics for Real-World Problems

Get real-time intel so you can actively detect incidents before they become critical situations, e.g., a loitering analytic could trigger the camera's lightbars and warning messages.

Unlimited Mix-and-Match Applications

Just a handful of unique components can be mixed and matched as your needs evolve; all components are completely modular, hot-swappable, and universally interchangeable.

The Easiest Camera You'll Ever Install

Screw. Snap. Twist. Done.

Install each camera in five minutes or less! Here's how...



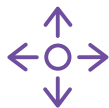
Four-Screw Install

Affix the base to its surface with just four screws, then simply snap and twist the remaining components together—no additional tools or hardware required.



Direction Indicators

Physical indicators on the various components allow you to intuitively orient them for fast installation, and make it impossible to install the camera incorrectly.



Remote Positioning

Set up the perfect field-of-view from anywhere within seconds. This is a one-person job, with no ladders or cell phones required!



IP Address on the Hub

The camera's IP address resides on the network hub (which manages up to 4 sensors); there's no need to allocate a new address if you add or replace a camera sensor.



PoE Status Indicator

In addition to providing power/data status, an LED on the network hub indicates the power level status, so you can self-diagnose a potential power issue.



Automated Image Tuning

The camera's AI Vision does all the fine tuning automatically, optimizing the camera for its environment without manual intervention.



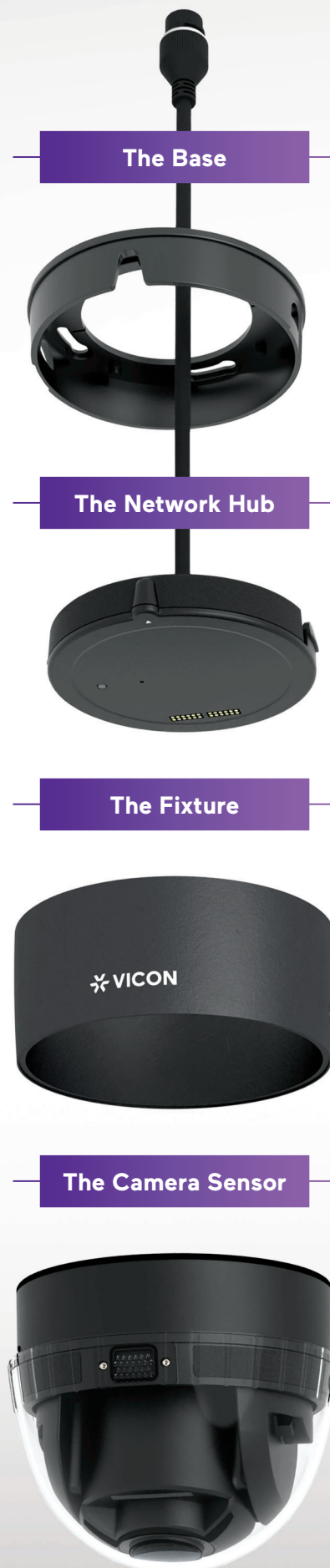
Single-Step Corridor Mode

The imager automatically orients itself to corridor/hallway mode.



Factory-Sealed Camera

This eliminates risk of improper installation, water and dust intrusion, and even fingerprints on the lens.

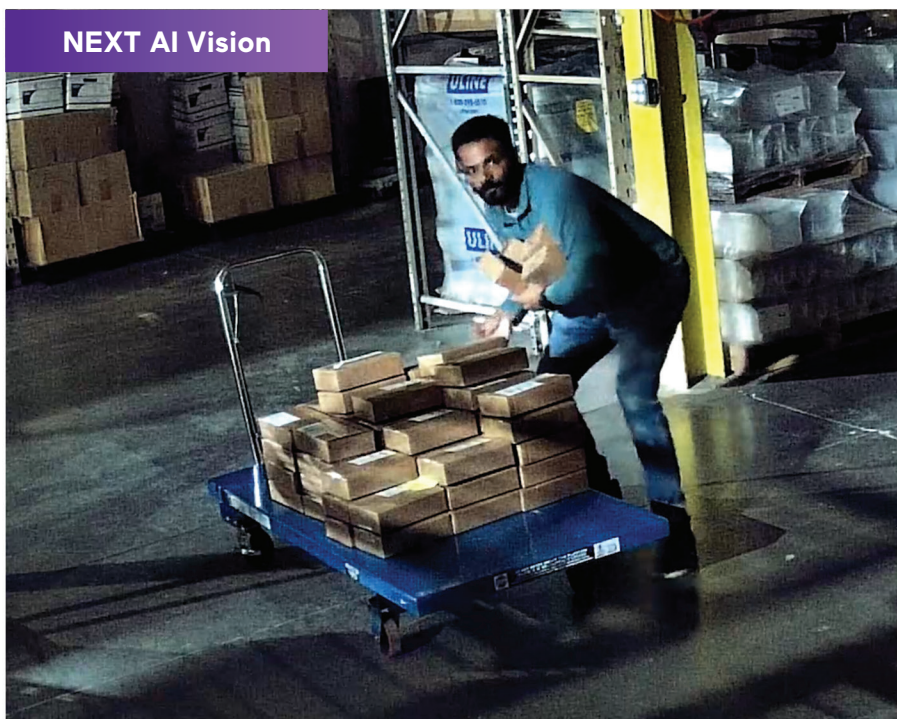


Unparalleled Video Clarity in Any Environment

No Light? No Problem!

Any camera can deliver a great picture in ideal conditions. But how a camera responds when lighting conditions are compromised makes all the difference. NEXT incorporates AI Vision for sharper, clearer images—always in color—even in near-dark conditions.

NEXT AI Vision



Traditional IR



Real-Time Auto-Tuning

NEXT's AI Vision does all the fine tuning automatically, constantly optimizing the camera for its environment and lighting, in real-time, without manual intervention.



See Colors in the Dark

The camera's Artificial Intelligent Retina (AI-R) lets you see colors in as low as 0.02 lux, so you can quickly detect incidents and identify suspects, even in near-dark conditions.



Leverage Color-Based Analytics

Perform searches based on things like the color of a person's clothing or the color of a vehicle, even in the dark (when traditional cameras switch to black & white).



Say Goodbye to IR

Eliminate the inconveniences that come with IR—like lens spotting, IR flare and unusable video in the rain.

The Smartest Camera in the Room

An Entire Communication System Packaged into a Single Device

With one of the smallest footprints in the industry, this camera is bundled with intelligent features that render it more than just a camera—it's a self-contained solution with an advanced onboard communication system.



Powerful Microphones

Two powerful microphones let you hear what's going on within 50 feet (15 m) in any direction of the sensor.



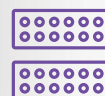
360° Speakers

Two commercial-grade speakers emit customized messages up to 50 feet (15 m) in all directions, so you can communicate pre-recorded instructions and warnings PLUS direct talk-down in real-time.



AI Analytics

Real-time intel lets you proactively detect and prevent incidents before they become critical situations.



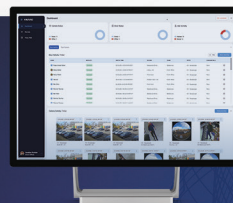
Programmable LED Signal Lightbars

Four programmable lightbars can communicate situational awareness status, e.g., flashing red for warning, solid green for all-clear, blue for shift change, amber for person in lobby, etc.



Will These Features Work With My VMS?

Yes! NEXT is certified for compatibility with the industry's leading VMS platforms, allowing you to leverage all of these innovative features without having to rip and replace your existing systems and infrastructure.



When used with Vicon's Anavio platform, each NEXT sensor comes with a free Anavio license.



Click or scan for details on which features are available with each compatible VMS.



Your Modular NEXT Ecosystem

Here's How It Comes Together

The system's modular design allows it to adapt to your unique needs, supporting a myriad of applications with interchangeable, hot-swappable, mix-and-match components.

The Mounts*



Pendant Mount



Conduit Box



In-Ceiling Mount



Electrical Box Adaptor



Wall Mount



Corner Mount



Pole Mount

* Fixture Kits can be surface-mounted directly to a ceiling, no mount required.

The Fixtures



Solo



Duo



Trio



Quad

The Camera Sensors



One



Two



Three



Four



Pendant Mount, Solo Fixture and One Camera Sensor shown

- A single network hub (and IP drop) powers from 1-4 sensors and accommodates any fixture.
- The streamlined offering simplifies ordering and reduces risk of incompatibility.
- All mounts and fixtures are universally compatible with the network hub and camera sensors.
- Each mount and fixture can be mixed and matched—hot swappable—as your requirements change.
- The installation process is identical for every configuration, significantly reducing the learning curve. Once you learn how to install one, you can install any!



Camera Sensor



System on Chip (SoC)

SoC	AI Vision Processor
Neural Net Processing	20 TOPS
Memory	4GB DDR + 4GB eMMC

Imaging

Image Sensor	1/1.8"
Resolution	Ultra HD 4K (3840 x 2160)
Image Signal Processing (ISP)	AI De-noise, Neural Net HDR
Image Settings	Automatic; self-tuning with AI signal processing
Minimum Illumination	Low-light color 0.02 lux
IR	Artificial Intelligent Retina (AI-R)
Day/Night	AI ISP in full color
WDR	120 dB True WDR
Shutter Speed	Auto (full frame rate)
On-Screen Display	Date and time Camera name/text string (up to 85 characters, customizable) OSD position setting Configurable font color, background color, and character size

Lens

Field-of-View	Wide: 109.8° (H) x 61.8° (V) Tele: 57.2° (H) x 32.2° (V)
Focal Range	4.42 mm - 9.51 mm (motorized varifocal with autofocus)
Focus Control	Auto
Aperture	f1.35
Iris	P-Iris (Auto)

Positioning

Lens Positioning	Remotely adjustable pan, tilt, roll, zoom (PTRZ)
Pan (Yaw)	+/- 175°, > 10°/s
Tilt (Pitch)	15° ~ 95°, > 10°/s
Roll	-5° ~ 95°, > 10°/s
Presets	2
Orientation	Landscape and portrait (corridor) modes
Privacy Zones	8 zones

Video

Image Compression	H.265, H.264, MJPEG
Maximum Frame Rate	30 fps
Resolution & Streams	4 streams @ 30fps 3840 x 2160 1280 x 720 720 x 408 384 x 216
	4 streams @ 25fps 3840 x 2160 1920 x 1080 1280 x 720 720 x 408
Maximum Streams	10 at 8 Mbps per stream (80 Mbps total)
Customized Video Profile	CBR/CVBR
Data Rate	500~12000 bps

Communications

Audio Compression Format	A-Law/μ-Law, Opus
Microphones	2 microphones; up to 50 ft (15 m)
Speakers	2 speakers; up to 50 ft (15 m)
Pre-Recorded Messages	10 customizable audio files
Direct Talk-Down	Yes
LED Signal	4 RGBW Lightbars; up to 50 ft (15 m)

Camera Sensor cont'd

System

Real-Time Analytics	Motion detection, tamper/blur detection, tripwire/line detection cross detection, intrusion detection, crowding detection, loitering detection, tailgating detection
Forensic Analytics	Museum search, classification (people, vehicle, animal), vehicle color, people attributes (lower and upper body clothing color)
Onboard Storage	microSDXC (sold separately) Up to 1TB per Sensor

Network Hub



System on Chip (SoC)

SoC	Dedicated Network Processor
Memory	1GB DDR + 4GB eMMC
Sensor Management (1-4 Sensors)	Management of network settings, sensor configuration, backup and restoration of settings, firmware upgrades

Network

Ethernet	10/100/1000 Mbps
Connector	RJ45 (IP67 coupler)
Control	Reset/Default button

Electrical

PoE	Solo/Duo Sensor: 802.3at Trio/Quad Sensor: 802.3bt
LED Status Indicator	Power/Data Power level detection status (af, at, bt)

Alarms

Input/Output	1 dry contact/1 dry relay output (terminal block at pigtail)
--------------	--

System Integration

ONVIF	Conforms to ONVIF Profiles S/T/G/M
-------	------------------------------------

System Camera Sensor + Network Hub



General

Power Consumption Solo: 18.4 W (802.3at) Duo: 27.7 W (802.3at)	Trio: 37.7 W (802.3bt) Quad: 47 W (802.3bt)
---	--

Protocols IPv4, IPv6, HTTP, HTTPS, UPnP, DNS, DDNS, NTP, RTSP, RTP, TCP, UDP, ICMP, IGMP, DHCP, ARP, IEEE 802.1X, FTP, RTCP, SMTP, SNMP v1/2c/3, QoS, TLS, LDAP

Utilities PRONTO network config & FW management for VMS use

Web Browser	Safari, Firefox, Chrome, Edge
--------------------	-------------------------------

Security TPM 2.0 (FIPS 140-2 level 2, CC EAL 4+), Password protection, IP address filtering, HTTPS, IEEE 802.1X network access control, Digest authentication, Secure boot, SB-327 support
--

Account Management	Multiple user groups (10 admin/operator/user)
---------------------------	---

Profile Management	User configurations import/export
---------------------------	-----------------------------------

Firmware Update	Web update, PRONTO, Over-the-Air (OTA) for Anavio
------------------------	---

Language	English
-----------------	---------

Environmental

Operating Temperature Cold Start Temperature	-40°F to 131°F (-40°C to +55°C) -40°F (-40°C)
---	--

Storage Temperature	-40°F to +140°C (-40°C to +60°C)
----------------------------	----------------------------------

Operating Humidity	90%, non-condensing
---------------------------	---------------------

Weather Resistance	IP67
---------------------------	------

Vandal Resistance	IK10
--------------------------	------

Regulatory

UL UL 62368-1 and CSA C22.2 No. 62368-1:19
--

CE EN 55032, EN 55035, EN 61000-3-2, EN 61000-3-3, IEC 61000-4-2, IEC 61000-4-3, IEC 61000-4-4, IEC 61000-4-5, IEC 61000-4-6, IEC 61000-4-8, IEC 61000-4-11, UKCA

FCC	FCC, Part 15, Subpart B, Class A
------------	----------------------------------

RoHS	Directive 2011/65/EU and EN 63000-2018; EU Directive 2015/863/EU
-------------	--

Compliance	NDAA, GSA, TAA
-------------------	----------------

Country of Origin	Taiwan
--------------------------	--------

Warranty	5 years
-----------------	---------

Dimensions + Construction

Solo Fixture Kit + Camera Sensor

Camera Sensor Material:
Aluminum Magnesium Alloy and Polycarbonate (factory sealed)

Solo Fixture Material:
Engineered Polymer



Combined Weight:
1.63 lbs
(0.74 kg)

Dimensions:
Height: 4.38 in. (111.5 mm)
Diameter: 4.44 in. (113 mm)

Trio Fixture Kit + Camera Sensors

Camera Sensor Material:
Aluminum Magnesium Alloy and Polycarbonate (factory sealed)

Trio Fixture Material:
Engineered Polymer



Combined Weight:
5.25 lbs
(2.9 kg)

Dimensions:
Height: 5.25 in. (133.6 mm)
Width: 8.97 in. (228 mm)
Depth: 8.4 in. (213.3 mm)

Conduit Box Mount

Material:
Aluminum Magnesium Alloy with rubber conduit plugs

Weight:
0.93 lb
(0.42 kg)

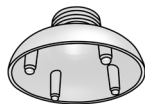


Dimensions:
Height: 2.53 in. (64.3 mm)
Diameter: 4.5 in. (114.4 mm)

Pendant Mount

Material:
Aluminum Magnesium Alloy

Weight:
0.24 lb
(0.11 kg)



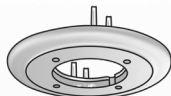
Dimensions:
Height: 2.5 in. (63.6 mm)
Diameter: 4.44 in. (113 mm)

Compatible with 1.5" female interfaces

Electrical Box Adaptor

Material:
Aluminum Magnesium Alloy plate with Engineered Polymer trim ring

Weight:
0.21 lb
(0.095 kg)

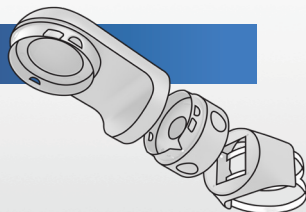


Dimensions:
Diameter: 5.66 in. (144 mm)
Less than 1/2" thick

Pole Mount Kit

Material:
Cold Rolled Steel and Thermoplastic Rubber*

Weight:
2.92 lbs
(1.32 kg)



Dimensions:
Length: 12.9 in. (327.5 mm)
Width: 5.24 in. (133.2 mm)

Click or scan for the NEXT Mounting Guide, which contains detailed mounting specs and compatibilities.



Duo Fixture Kit + Camera Sensors

Camera Sensor Material:
Aluminum Magnesium Alloy and Polycarbonate (factory sealed)

Duo Fixture Material:
Engineered Polymer



Combined Weight:
3.5 lbs
(1.6 kg)

Dimensions:
Height: 5.25 in. (133.6 mm)
Width: 8.97 in. (228 mm)
Depth: 4.44 in. (113 mm)

Quad Fixture Kit + Camera Sensors

Camera Sensor Material:
Aluminum Magnesium Alloy and Polycarbonate (factory sealed)

Quad Fixture Material:
Engineered Polymer



Combined Weight:
7 lbs
(3.2 kg)

Dimensions:
Height: 5.25 in. (133.6 mm)
Width: 9.04 in. (229.8 mm)
Depth: 9.04 in. (229.8 mm)

Wall Mount

Material:
Engineered Polymer body and Aluminum Magnesium mount Interface

Weight:
1.04 lbs
(0.47 kg)



Dimensions:
Height: 4.44 in. (113 mm)
Length: 8.29 in. (210.8 mm)

In-Ceiling Mount

Material:
Zinc-Plated Cold Rolled Steel bracket and Engineered Polymer trim ring

Weight:
0.97 lb
(0.44 kg)

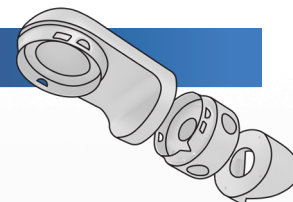


Dimensions:
Height: 3.05 in. (77.5 mm)
Diameter: 8.0 in. (203.4 mm)

Corner Mount Kit

Material:
Cold Rolled Steel and Nylon*

Weight:
3.47 lbs
(1.57 kg)

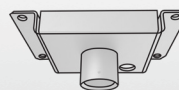


Dimensions:
Length: 12.6 in. (320.4 mm)
Width: 4.6 in. (116.7 mm)

Ceiling Mount

Material:
Carbon Steel

Weight:
3.1 lbs
(1.5 kg)



Dimensions:
Height: 6.0 in. (152.4 mm)
Width: 9.0 in. (228.6 mm)
Depth: 3.1 in. (78.7 mm)

* This is the material for the adaptor bracket only; see above for wall mount and conduit box material.

Ordering Information

Camera Sensor

VNX-SN-VRS1-0

4K (8 MP) 4.42 mm - 9.51 mm
P-Iris lens with 2.15x optical zoom.



Solo Fixture Kit

VNX-FX-SOBK-0

Includes solo fixture, network hub, and base. Camera sensor and mount (optional) ordered separately.



Trio Fixture Kit

VNX-FX-TRBK-0

Includes trio fixture, network hub, and base. Camera sensors (3) and mount ordered separately.



Wall Mount

VNX-AC-WBBK-0

Use this when mounting any of the fixtures on a wall. Also compatible with Conduit Box Mount.



In-Ceiling Mount

VNX-AC-ICBK-0

Use this when recessing a single sensor into a ceiling.



Conduit Box Mount

VNX-AC-CBBK-0

Use this when you need to protect the cables from the elements, vandalism, etc. Also compatible with Wall Mount.



Pole Mount Kit

VNX-AC-PMKT-0

Use this when mounting any of the fixtures to a pole (includes pole adaptor, wall mount, and conduit box mount).



NEXT Edge Storage

VNX-EL-SD1T-0

1TB for Anavio/edge recording.



VNX-EL-SD5G-0

512 GB for Anavio/edge recording.

Duo Fixture Kit

VNX-FX-DUBK-0

Includes duo fixture, network hub, and base. Camera sensors (2) and mount ordered separately.



Quad Fixture Kit

VNX-FX-QDBK-0

Includes quad fixture, network hub, and base. Camera sensors (4) and mount ordered separately.



Pendant Mount

VNX-AC-PCBK-0

Use this when suspending any of the fixtures from the ceiling. Contains industry-standard 1.5" NPT pipe thread for extending drop length.



Electrical Box Adaptor

VNX-AC-APBK-0

Use this adaptor plate when mounting any of the fixtures to 4S, double-gang and octagon boxes.



Corner Mount Kit

VNX-AC-CMKT-0

Use this when mounting any of the fixtures to a corner (includes corner adaptor, wall mount, and conduit box mount).



Ceiling Mount

VNX-AC-UCBK-0

Use this for pendant mount applications on a hard ceiling. Includes pipe coupler.

