

May 2026

Firmware Update for the Roughneck and Roughneck AI Camera Series

General Description

Vicon has released updated firmware for the cameras listed below. The accompanying PRONTO Device Manager Software V2.25 is available on Vicon's website. These cameras and firmware versions have been tested and validated with Vicon's Valerus VMS. **Vicon strongly recommends that you implement this firmware update as soon as possible.**

Camera	Product Code	New Firmware	Older Firmware
V2002B-W313MIR V2002D-W313MIR V2002D-W28IR	10554-00 10553-00 10555-00	VCAM3LM.01.00.1.6.7116	VCAM3LM.01.00.1.6.7016 Link to old release notes.
V2005D-W313MIR V2005D-W818MIR V2005D-W28IRM V2005D-W28IR V2005B-W313MIR V2005B-W818MIR	10553-10 10575-00 10555-15 10555-05 10554-10 10576-00	VCAM5L.01.00.0.8.7116 *	VCAM5L.01.00.0.8.7016 Link to old release notes.
V2008D-W310MIR V2008D-W818MIR V2008B-W310MIR V2008B-W818MIR V2008-W-NL	10553-15 10575-10 10554-15 10576-10 10556-00	VCAM5L.01.00.0.12.7116 *	VCAM5L.01.00.0.12.7016 Link to old release notes.
V2102B-W313MIR V2105B-W313MIR V2102B-W28IR V2105B-W28IR V2102D-W313MIR V2105D-W313MIR	10558-05 10558-25 10558-00 10558-20 10557-00 10557-10	VCNT.01.00.0.11.7116	VCNT.01.00.0.11.7016 Link to old release notes.
V-CELL-HD-C V-CELL-HD-CMOD V2005CNR-W24IR	10578-00 10578-10 10579-00	VCAMCV2.01.00.0.17.7116	VCAMCV2.01.00.0.17.7016 Link to old release notes.
V2008B-W310LPR V2008-WNL-LPR V2008-W1250-LPR V2008B-W818LPR V2008-W0950-LPR	10554-20 10556-10 10556-20 10577-00 CLPR00	VCAM5L.01.00.1.14.7116	VCAM5L.01.00.1.14.7016 Link to old release notes.
V2360W-12-1	10559-05	VCAMCV2.01.00.0.10.7116	VCAMCV2.01.00.0.10.7016 Link to old release notes.
V2002D-PTZ	10561-00	VCAM3LM.01.02.1.13.7116	VCAM3LM.01.02.1.13.7016 Link to old release notes.
V2005D-PTZ	10561-10	VCAM5L.01.01.0.15.7116	VCAM5L.01.01.0.15.7016 Link to old release notes.

Vicon Production

The latest firmware and discovery tool are available on Vicon's website. A link is provided in the installation section of this document. Manufacturing will start using the released firmware for camera production.

***Note:** A small number of V2005-xxx cameras in the field are using the VCAM5L.01.00.0.12.xxx firmware instead of the usual VCAM5L.01.00.0.8.xxx firmware. These are different hardware V2005 versions, that require a different firmware. If the V2005-xxx camera is already running a VCAM5L.01.00.0.12.xxx firmware, please use the VCAM5L.01.00.0.12.7116 firmware to upgrade.

Please review the installation instructions described at the end of this document.

Fixed Issues

- **Firmware Update Procedure** – Added a mechanism to test the NVRAM (nonvolatile memory) and skip badblocks when detected.
- **Power Interruption During Bootup** Fixed an issue so that when power is interrupted during boot-up, there is no longer a small possibility the camera will not restart.
- **Heater Status** – Improved the way the heater status (for applicable models) is reported in ONVIF.
- **Event Notification** – Implemented improved method for event push, so that Event Push stream now includes analytics data (applicable models only).

Installing the Updated Firmware

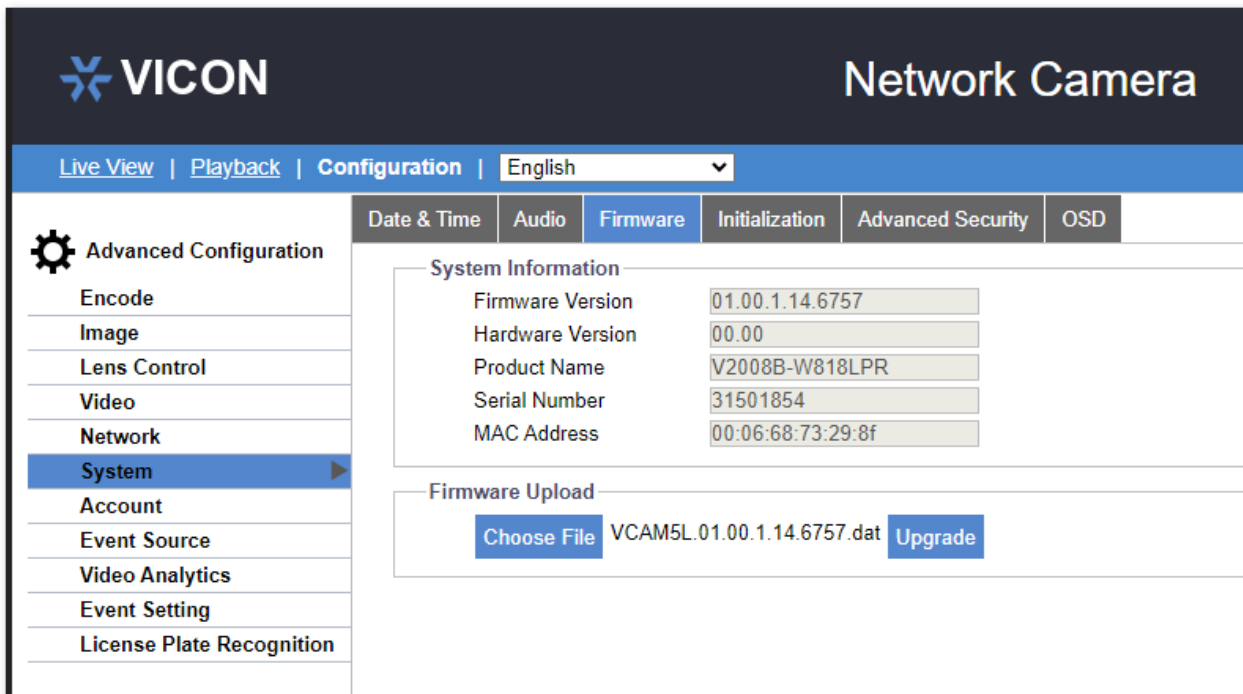
Download the firmware to your PC. Unzip the file.

There are two options to install the new firmware in the camera:

- Using web interface of the camera, uploading the firmware directly into the device.
- With PRONTO Device Manager Software that can be installed on a PC.

How to update firmware via camera web interface

In the camera web interface, under Configuration > System > Firmware, press “Choose File” under “Firmware Upload” and select the downloaded firmware file. Then press “Upgrade” to start the update. The camera will install the update and reboot with the new firmware version:



How to update firmware via PRONTO

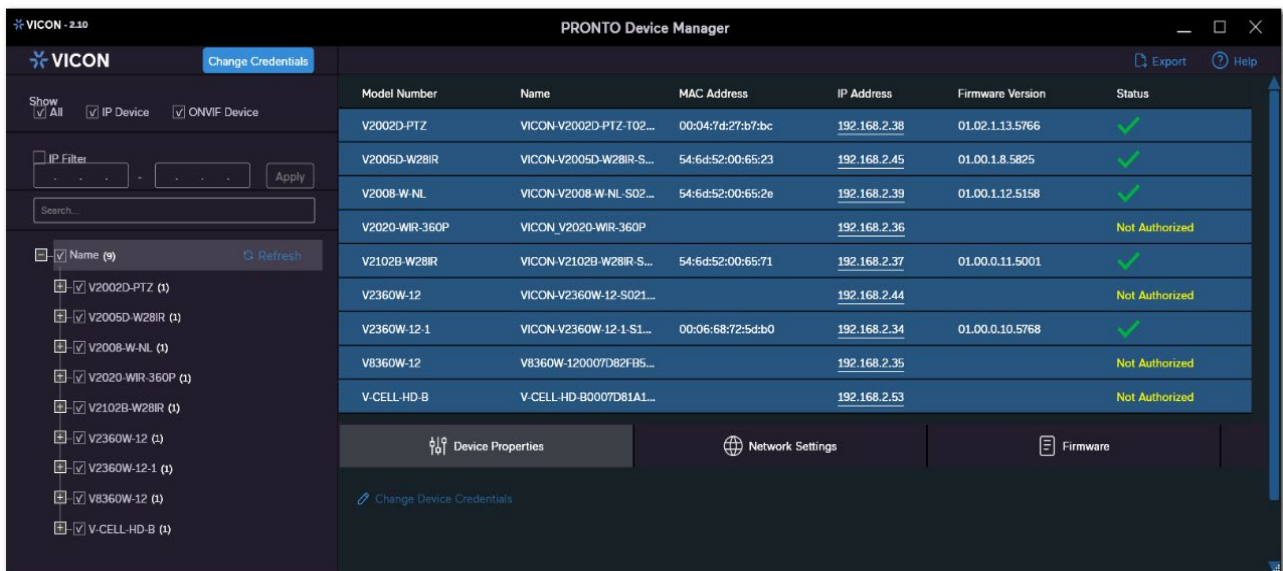
PRONTO is Vicon's device manager tool that can be used to discover all Vicon cameras in a network. This standalone single discovery tool running on a PC allows users to discover cameras in the network, configure network parameters and update camera firmware (single camera, or in batch).

Pronto Device manager can be downloaded from Vicon's website:

<https://www.vicon-security.com/software-downloads-library/pronto-device-manager-software/>

Pronto Device manager user guide can be found here:

[Vicon Pronto Device Manager User Guide-02.pdf](#)



To update firmware on one or more cameras:

- Scan the network and find the camera model that needs a firmware update.
- Enter valid credentials for the camera that needs a firmware update.
- Select camera(s). (More cameras can be selected that use the same firmware file.)
- Press the "Upload Firmware File" button; load the new firmware into Pronto.
- Press "Upgrade Device" and select the new firmware file just loaded into Pronto.
- Press Apply. The new firmware is now uploaded to the selected camera(s).
- Allow some time for the camera(s) to reboot after the firmware is uploaded.
- Press "Refresh" and verify the camera(s) are now listed with the new firmware version.