

Thick-Client Solution

XX285-55-01



Vicon Industries Inc. does not warrant that the functions contained in this equipment will meet your requirements or that the operation will be entirely error free or perform precisely as described in the documentation. This system has not been designed to be used in life-critical situations and must not be used for this purpose.

Document Number: 8009-8285-55-01 Rev: 7/20
Product specifications subject to change without notice
Copyright © 2020 Vicon Industries Inc. All rights reserved.

Vicon Industries Inc.

Tel: 631-952-2288) Fax: 631-951-2288

Toll Free: 800-645-9116

24-Hour Technical Support: 800-34-VICON

(800-348-4266)

UK: 44/(0) 1489-566300

www.vicon-security.com

Table of Contents

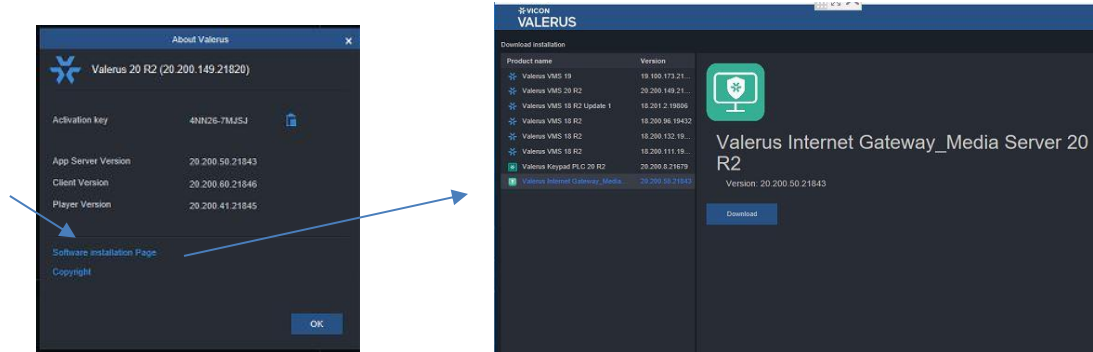
General	3
Valerus Client Installation and Configuration	3

General

Vicon® Valerus™ VMS is an advanced video management solution designed to operate on IP networks and uses a standard web browser as its client. As an alternative, Valerus provides a thick-client solution for those who prefer not to work within the browser environment or where operator control is limited and program startup with preconfigured settings or screens is required.

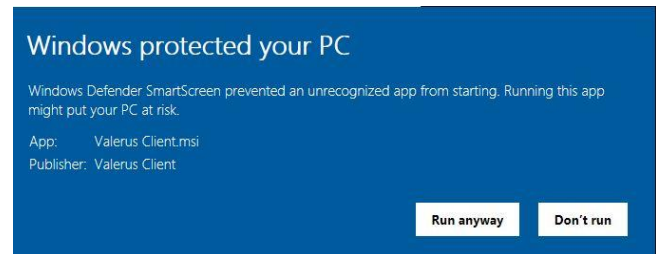
Valerus Client Installation and Configuration

The software for the Valerus Thick Client is available from the Valerus VMS Software Installation page; Valerus VMS is available on Vicon's website. Go to the About page and click Software Installation Page.

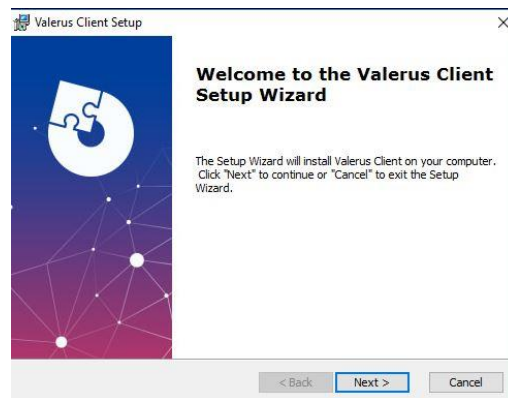


Download the software and install it following the instructions below.

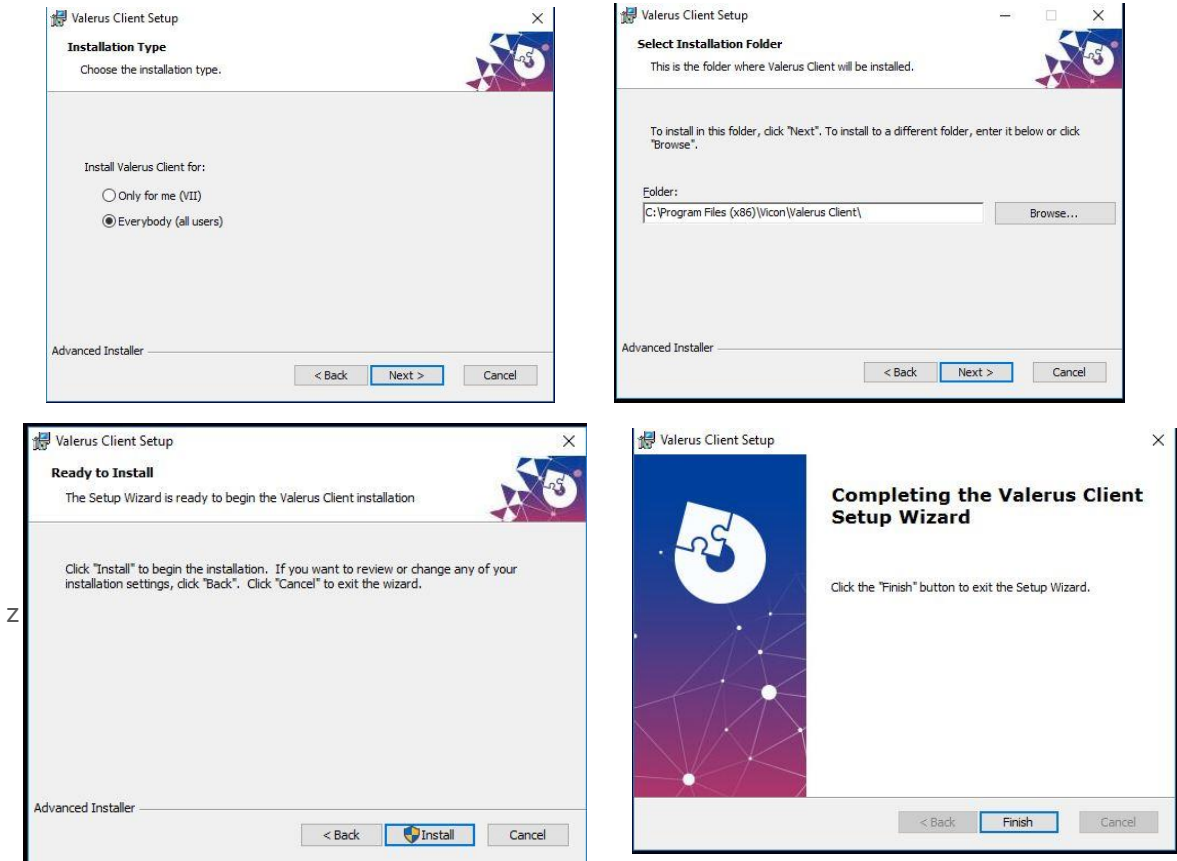
- Double click the Valerus Client.msi Windows Installer package file.
- You may receive a Security Alert message that the Windows firewall has blocked this app. Click Allow access or Run anyway.



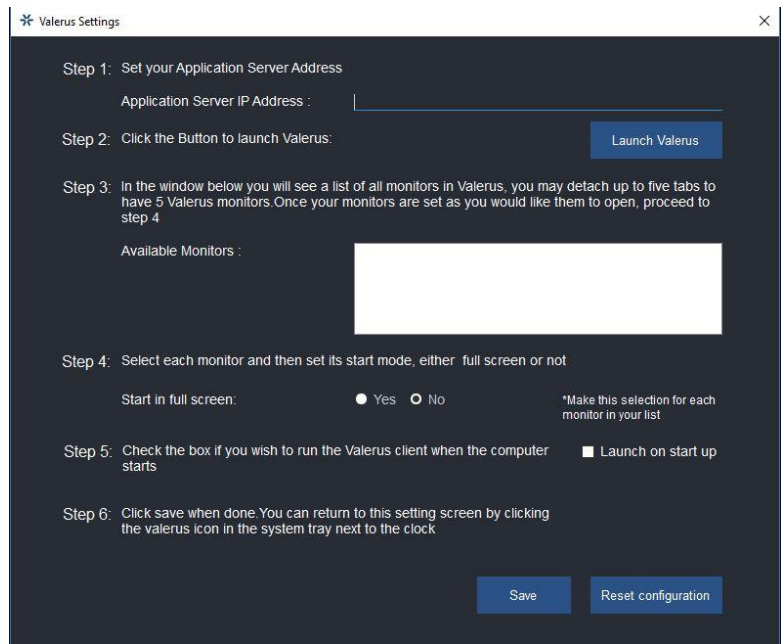
- The Setup Wizard will display. Click Next. The installation process will begin.



- Select if everyone should have access (default) or only this user has access to this Client. Click Next. Follow any prompts, including where to install this file, click Install and then Finish.



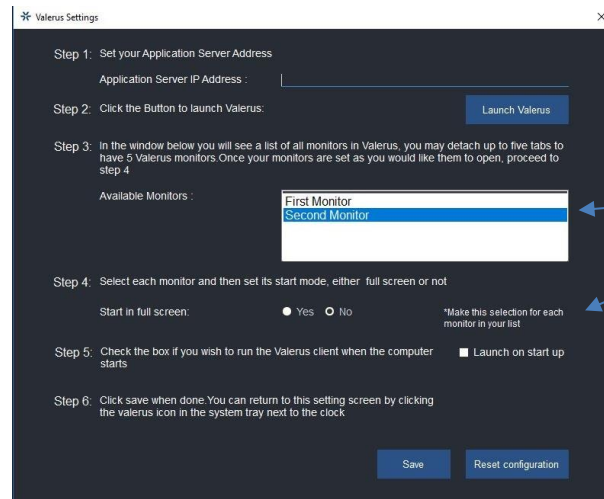
- The screen below displays, outlining the steps for configuring the Client. Note that this will only show the first time you run the application; it will not show once configuration is complete.



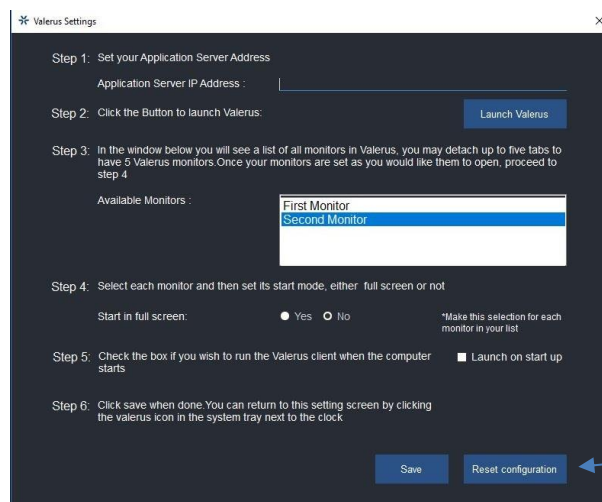
- Step 1:** Enter the IP Address of the Application Server of your system.
- Step 2:** Click the Launch Valerus button. The installation process begins.
- Step 3:** The system will detect your monitors and display them in the Available Monitors list. You may detach up to five (5) View tabs to display on five (5) monitors; this should be done from the main monitor only to avoid mis-numbering of the monitors.

Step 4: Select *each* monitor and designate if it should start in full screen, Yes or No. Once a monitor is created and saved, removing it will require resetting the Client settings as described in step 6.

Note: From the Valerus screen, if you double click a display to make it full screen, the Windows white bar at the top may still be partially visible. If this happens, go back to the setup screen and in the Start in full screen (Step 4), select No and then Yes to correct this situation.

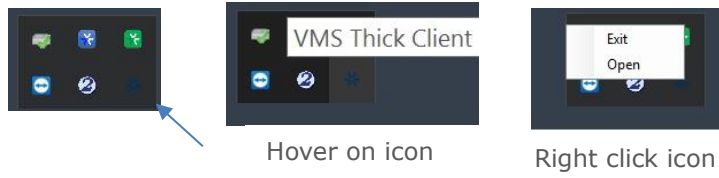


- *Step 5:* Check the box if you want the Thick Client to launch on start up of the PC.
- *Step 6:* Save your settings; once saved, the Client will start in this configuration. If you want to change any of the settings, click Reset configuration. All previously made settings will be removed; start again from step 1 to make the new settings and click Save.



- The Valerus Client installs and a shortcut icon is placed on your desktop.
- Click the Valerus Client shortcut to run the Valerus Client. Login as usual. Valerus opens in a desktop window; it will be a regular or full screen display based on settings with full Valerus functionality
- The Valerus Client icon is now in the System Tray (next to the clock). You can double click this icon to access the setup dialog box to change any settings as needed. Additionally, right clicking the icon allows you to either open or exit the Client.





- Logging out of the Client shuts down the system. When it is relaunched, it will open as it was when logged out.



VICON INDUSTRIES INC.

For office locations, visit the website: vicon-security.com

