



Release Notes

February 2023

Updated Firmware for the V2008B-W310LPR, V2008-WNL-LPR, V2008-W1250-LPR and V2008B-W818LPR License Plate Recognition Cameras

General Description

Vicon has released updated firmware for production for the cameras listed below.

The accompanying PRONTO Device Manager Software V2.15 is available on Vicon's website.

These cameras and firmware version have been tested and validated with Vicon's Valerus VMS.

Camera	Product Code	Previous Firmware	Updated Firmware
V2008B-W310LPR V2008-WNL-LPR V2008-W1250-LPR V2008B-W818LPR	10554-20 10556-10 10556-20 10577-00	VCAM5L.01.00.1.14.5980	VCAM5L.01.00.1.14.5996

Vicon Production

The latest firmware and discovery tool are available on Vicon's website. A link is provided in the installation section of this document. Manufacturing will start using the released firmware for camera production.

Please review the installation instructions described at the end of this document.



Release Notes

New Features

New camera

This firmware is the initial firmware for the new camera model V2008B-W818LPR.

Fixed Issues

HTTP generic event

An incorrect or empty value in the HTTP generic event field can cause a memory leak. A provision has been implemented to avoid incorrect entries.

HLC controls

HLC (High Light Compensation) sliders and on/off control have been added to the user interface.

Lens options

i-CS lens option has been removed from cameras where this option is irrelevant.

Zoom control

Zoom control has been improved for camera models with motorized lenses.

SSL encryption

Optimized the SSL encryption tasks with less performance impact.

OSD text

An issue was fixed with wrong presentation for some characters when OSD (On-Screen Display) is used.

SSL Certificate

An issue was fixed where a newly uploaded certificate was not visible in the UI until the page was refreshed.

Password

In some cases, after the password was changed, the camera would ask for the new password twice. This has been corrected.



Release Notes

Installing the Updated Firmware

The latest firmware is available on Vicon’s website from the Software Downloads page. A link is provided below.

<http://www.vicon-security.com/software-downloads-library/vicon-camera-software/>

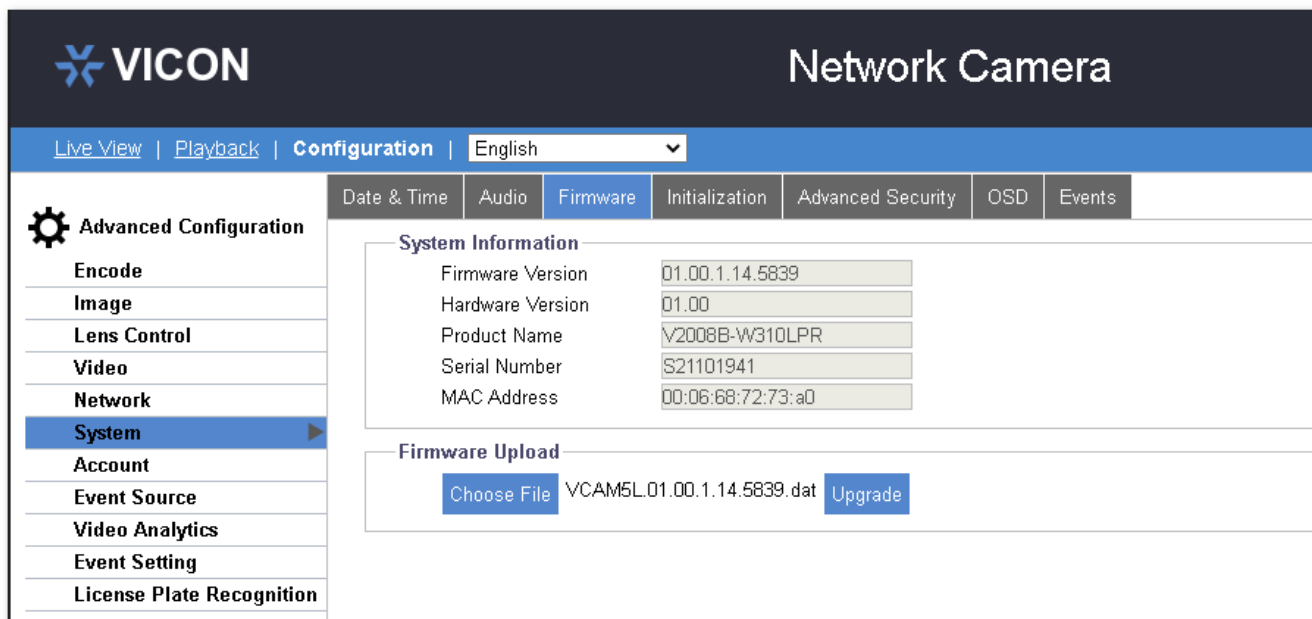
Download the firmware to your PC. Unzip the file.

There are two options to install the new firmware in the camera:

- Using the web interface of the camera, uploading the firmware directly into the device.
- With PRONTO Device Manager Software that can be installed on a PC.

Camera Web Interface

In the camera web interface, under Configuration > System > Firmware, press “Choose File” and select the downloaded firmware file. Then press “Upgrade” to start the update. The camera will install the update and reboot with the new firmware version:



Release Notes

Using PRONTO Device Manager Software

PRONTO is Vicon's Device Manager tool that can be used to discover all Vicon cameras in a network. This standalone single discovery tool running on a PC, allows users to:

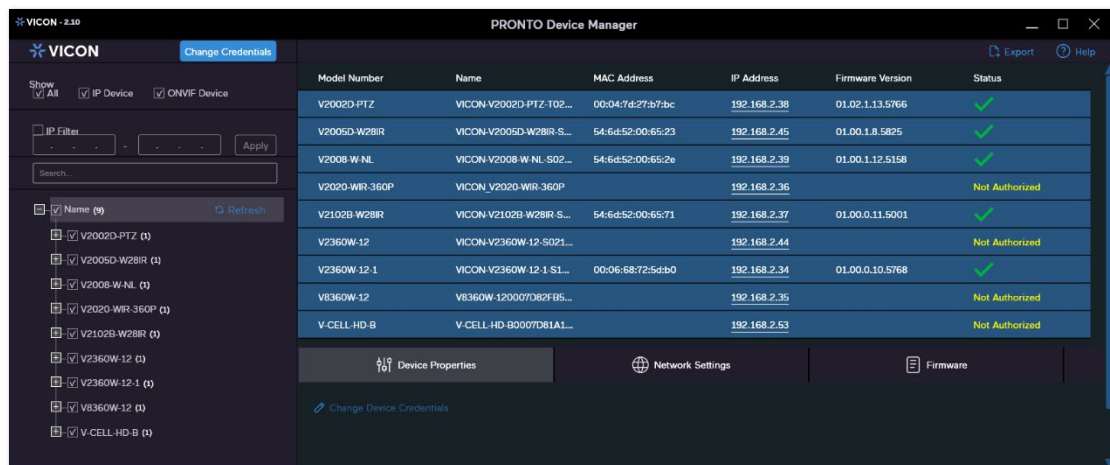
- Discover cameras
- Set up IP addresses: DHCP, manual, batch
- Configure initial passwords
- Launch camera web interface
- Upgrade firmware, single and batch, based on firmware file or device type
- Generate reports for all currently connected cameras, legacy Vicon cameras and other connected ONVIF devices.

Pronto Device Manager can be downloaded from Vicon's website:

<https://www.vicon-security.com/software-downloads-library/pronto-device-manager-software/>

Pronto Device Manager User Guide can be found here:

https://www.vicon-security.com/wp-content/uploads/2022/08/Vicon-Pronto-Device-Manager_User-Guide.pdf



- Scan the network and find the camera model that needs a firmware update.
- Enter valid credentials for the camera that needs a firmware update.
- Select camera(s) (multiple cameras can be selected that use the same firmware file).
- Press the "Upload Firmware File" button; load the new firmware into Pronto.
- Press "Upgrade Device" and select the new firmware file just loaded into Pronto.
- Press "Apply." The new firmware is now uploaded to the selected camera(s).
- Allow some time for the camera(s) to reboot after the firmware is uploaded.
- Press "Refresh" and verify the camera(s) are now listed with the new firmware version.

Note: In some cases, when a new camera model is released, it may be necessary to load a new "FW definition file" into Pronto. This file establishes the correlation between the camera model and the applicable firmware file for the camera model.

When needed, this file will be made available on Vicon's website.